

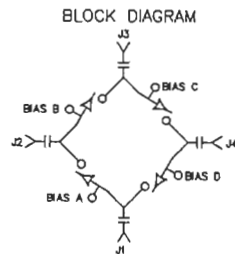
DESCRIPTION

AMC MODEL SWN-TRA-618 IS A TRANSFER SWITCH MODULE WITH LOW INSERTION LOSS, HIGH ISOLATION AND WITH AN INTEGRAL TTL DRIVER IN A SMALL 1.0" x 1.0" x 0.5" PACKAGE, DESIGNED FOR 6 GHz TO 18 GHz OPERATION.

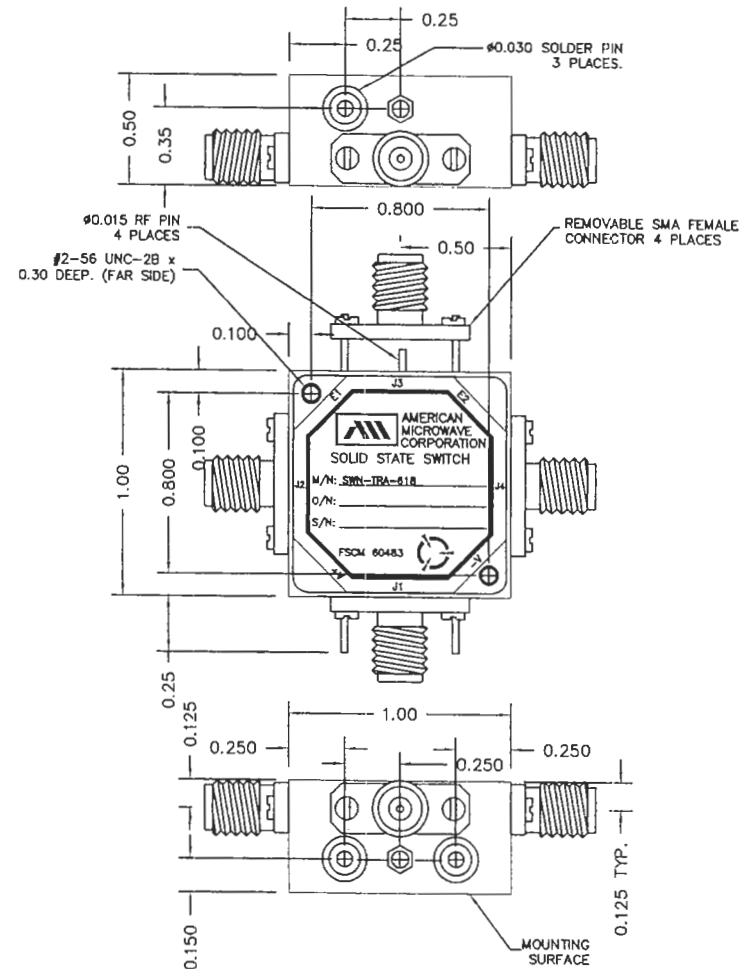
SPECIFICATIONS

- FREQUENCY RANGE:.....6.0 GHz TO 18.0 GHz
- INSERTION LOSS:.....3.0 dB MAXIMUM, 2.5 dB TYPICAL
- ISOLATION:.....65 dB MINIMUM
- SPEED:.....DELAY ON: 500 nSec MAXIMUM, 100 nSec TYPICAL
DELAY OFF: 500 nSec MAXIMUM, 100 nSec TYPICAL
- POWER INPUT:.....CW, +20 dBm TYPICAL
- SURVIVAL POWER:.....1 WATT CW, 10 WATTS PEAK 1 uSec
- CONTROL:.....SEE TABLE 1
- POWER SUPPLY:.....+5V @ 150 mA MAXIMUM
-12V @ 150 mA MAXIMUM
- TEMPERATURE:.....-54°C TO +85°C
- CONNECTORS:.....SMA FEMALE (REMOVABLE)
- SIZE:.....1.00" (L) x 1.00" (W) x 0.50" (H)
- WEIGHT:.....1.5 oz.

| TTL LOGIC | LOW LOSS PATH | ISOLATED PATH |
|-----------|----------------|----------------|
| 0 | J1-J2 J3-J4 | J1-J4 J2-J3 |
| 1 | J1-J4 J2-J3 | J1-J2 J3-J4 |



| REVISIONS | | | | |
|-----------|------|-------------------------|---------|----------|
| ZONE | REV. | DESCRIPTION | DATE | APPROVED |
| - | - | ORIGINAL JOB# 812411-8E | 2/18/00 | |



ENVIRONMENTAL RATINGS

- TEMPERATURE:.....-55°C TO +85°C (OPERATING)
-65°C TO +125°C (STORAGE)
- HUMIDITY:.....MIL-STD-202F, METHOD 103B COND. B
- SHOCK:.....MIL-STD-202F, METHOD 213B COND. B
- VIBRATION:.....MIL-STD-202F, METHOD 204D COND. B
- ALTITUDE:.....MIL-STD-202F, METHOD 105C COND. B
- TEMPERATURE CYCLE:.....MIL-STD-202F, METHOD 107D COND. A

NOTE: SPECIFICATIONS WILL VARY OVER OPERATING TEMPERATURE
NOTE: THE ABOVE SPECIFICATIONS ARE SUBJECT TO CHANGE OR REVISION

ALL DIMENSIONS ARE IN INCHES
TOLERANCES:
X.XX ±0.020
X.XXX ±0.010

AMERICAN MICROWAVE CORPORATION

7311-G GROVE ROAD
FREDERICK, MARYLAND 21704 USA
TEL: 301-662-4700 FAX: 301-662-4938
WEBSITE: www.americanmicrowavecorp.com
E-MAIL: sales@americanmicrowavecorp.com
ISO 9001:2000 CERTIFIED



| APPROVALS | | DATE | TITLE | | |
|-----------|--------------------|------------|-------------------------------------|--------|--|
| DRAWN | <i>KP & Rd</i> | 2/18/00 | PRODUCT FEATURE FOR IND (SW09) | | |
| REDRAWN | <i>gDJ</i> | 8/24/04 | SWN-TRA-618 | | |
| ISSUED | <i>LA</i> | 8/31/04 | 6 TO 18 GHz, TRANSFER SWITCH MODULE | | |
| SIZE | FSCM NO. | DWG NO. | REV. | | |
| A | 60483 | 100-4708-3 | - | | |
| SCALE N:S | | SHEET | | 1 OF 3 | |